


DISTRICT	COUNTY	ROUTE	SECTION	SHEET
6-0	CHESTER	LeBOUTILLIER	BRC	1 OF 1
TREDYFFRIN TOWNSHIP				
REVISION NUMBER	REVISIONS			DATE BY

SIGN TABULATION

SIGN GROUP NUMBER	SERIES	QUANTITY	SIZE	MESSAGE
1	R11-2	2	48"x30"	BRIDGE CLOSED
2	M4-8A	2	24"x18"	END DETOUR
3	SPECIAL 1	2	36"x18"	LeBOUTILLIER ROAD
	M4-9S	9	30"x24"	DETOUR (STRAIGHT)
4	SPECIAL 1	9	36"x18"	LeBOUTILLIER ROAD
	M4-9SR	3	30"x24"	ADVANCE DETOUR (RIGHT)
5	SPECIAL 1	3	36"x18"	LeBOUTILLIER ROAD
	M4-9R	3	30"x24"	DETOUR (RIGHT)
6	SPECIAL 1	3	36"x18"	LeBOUTILLIER ROAD
	M4-9SL	3	30"x24"	ADVANCE DETOUR (LEFT)
7	SPECIAL 1	3	36"x18"	LeBOUTILLIER ROAD
	M4-9L	3	30"x24"	DETOUR (LEFT)
8	SPECIAL 1	3	36"x18"	LeBOUTILLIER ROAD
	W20-2/W30-1-3	5	36"x36"	DETOUR 1000 FT.
9	SPECIAL 1	5	36"x18"	LeBOUTILLIER ROAD
	W20-2/W30-1-2	5	36"x36"	DETOUR 500 FT.
10	SPECIAL 1	5	36"x18"	LeBOUTILLIER ROAD
	M4-9AR	1	30"x24"	DETOUR (45° RIGHT)
11	SPECIAL 1	1	36"x18"	LeBOUTILLIER ROAD
	M4-9BR	1	30"x24"	ADVANCE DETOUR (45° RIGHT)
12	SPECIAL 1	1	36"x18"	LeBOUTILLIER ROAD
	M4-9AL	1	36"x36"	DETOUR (45° LEFT)
13	SPECIAL 1	1	36"x18"	LeBOUTILLIER ROAD
	M4-9BL	1	36"x36"	ADVANCE DETOUR (45° LEFT)
14	SPECIAL 1	1	36"x18"	LeBOUTILLIER ROAD
	W20-3/W30-1-2	1	36"x36"	ROAD CLOSED, 1000 FT
15	SPECIAL 1	1	36"x18"	LeBOUTILLIER ROAD
	W20-3/W30-1-1	2	36"x36"	ROAD CLOSED, 500 FT
97	SPECIAL 2	2	72"x36"	BRIDGE CLOSED, 1/2 MILE AHEAD, LOCAL TRAFFIC ONLY
98	SPECIAL 3	2	72"x36"	LeBOUTILLIER ROAD, CLOSED OVER VALLEY CREEK ON .../.....
99	SPECIAL 4	2	72"x36"	LeBOUTILLIER ROAD, CLOSED OVER VALLEY CREEK, FOLLOW DETOUR
A	M4-10R	2	48"x18"	DETOUR ARROW RIGHT
B	M4-10L	2	48"x18"	DETOUR ARROW LEFT

MINIMUM MATERIAL REQUIRED (FOR INFORMATION ONLY)

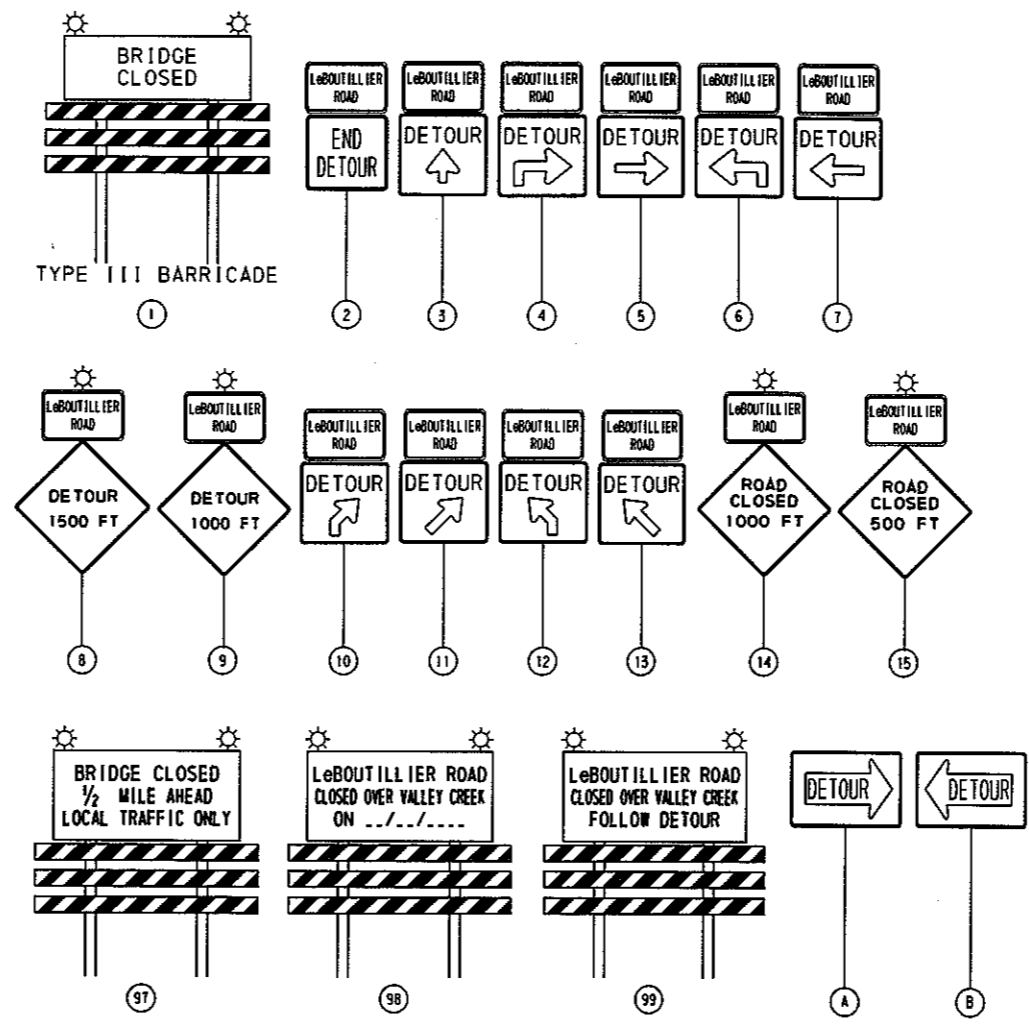
DESCRIPTION	QUANTITY	UNITS
POST MOUNTED SIGNS	600	S. F.
TYPE B LIGHTS	32	EACH
TYPE III BARRICADES	2	EACH

RECOMMENDED:

 DISTRICT TRAFFIC ENGINEER

FOR CONCURRENCE ONLY



TRAFFIC CONTROL PLAN



GENERAL NOTES:

THIS WORK CONSISTS OF THE MAINTENANCE OF TRAFFIC AND THE PROTECTION OF THE TRAVELING PUBLIC APPROACHING THE CONSTRUCTION AREA AND WITH THE LIMITS OF CONSTRUCTION.

THE DETOUR WILL BE REQUIRED FOR THE 2 MONTHS OF THE BRIDGE REHABILITATION.

CONTACT PENNDOT PRESS OFFICE 15 DAYS BEFORE START OF DETOUR AT 610-205-6800.

CONTACT LOCAL SCHOOL DISTRICT AND EMERGENCY OFFICIALS (POLICE, FIRE, AMBULANCE) 15 DAYS BEFORE START OF DETOUR.

PLACE ADVANCE NOTICE SIGN 98 TWO WEEKS PRIOR TO BRIDGE CLOSURE.

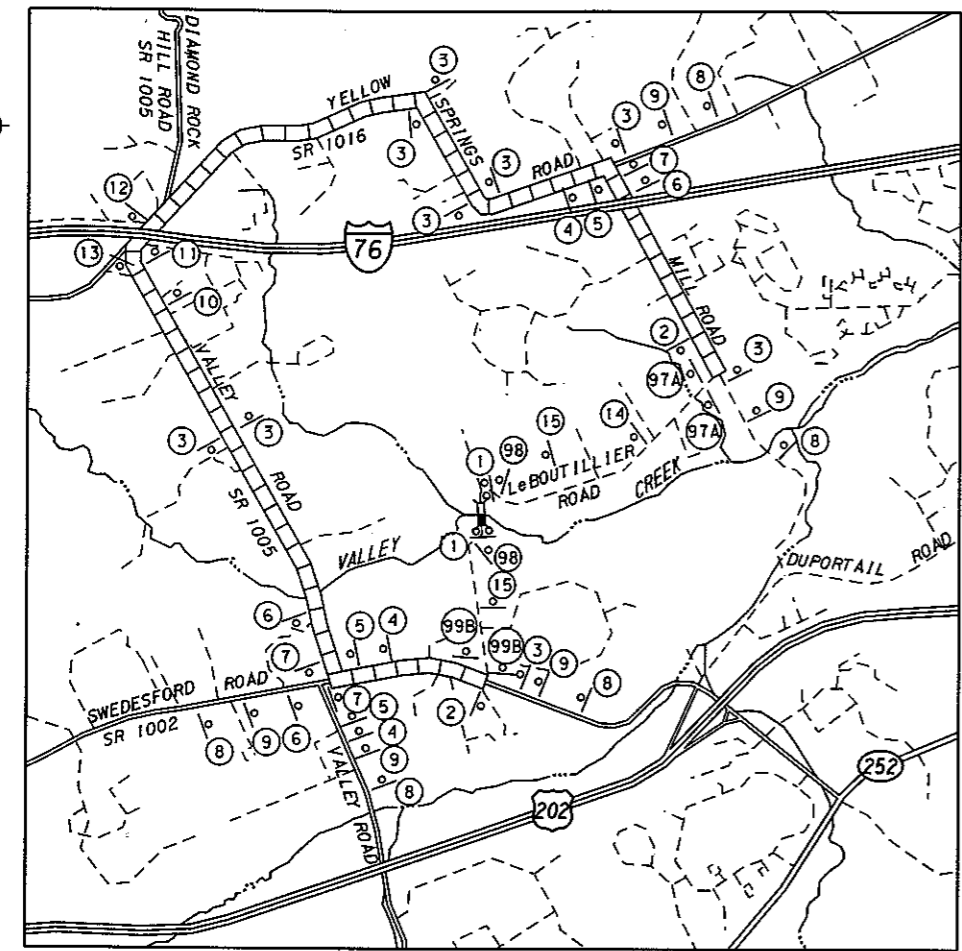
FURNISH, ERECT, PLACE AND MAINTAIN TRAFFIC CONTROL SIGNS AND DEVICES AND MAINTAIN TRAFFIC DURING HOURS OF CONSTRUCTION AND AT ALL OTHER TIMES IN ACCORDANCE WITH THE METHODS INDICATED ON THESE DRAWINGS AND,

- THE SPECIAL PROVISIONS OF THE CONTRACT
- PA CODE, TITLE 67, CHAPTER 212, OFFICIAL TRAFFIC CONTROL DEVICES
- PDT PUBLICATION 213, WORK ZONE TRAFFIC CONTROL GUIDELINES
- PDT PUBLICATION 35, APPROVED CONSTRUCTION MATERIALS (BULLETIN 15)
- PDT PUBLICATION 408, SPECIFICATIONS
- MANUAL ON UNIFORM TRAFFIC CONTROL DEVICES (MUTCD)

MAINTAIN ACCESS TO ALL DRIVEWAYS (COMMERCIAL AND RESIDENTIAL)

IMMEDIATELY UPON COMPLETION OF THE WORK, REMOVE THE DEVICES. THE DEPARTMENT WILL REMOVE ANY TRAFFIC CONTROL DEVICES ERECTED BY DEPARTMENT FORCES.

COVER OR REMOVE ALL SIGNS NOT IN USE.



LOCATION MAP

- LEGEND
- STATE HIGHWAY
 - - - TOWNSHIP ROAD
 - · - · - MUNICIPAL BOUNDARY
 - · — · — STREAM
 - ▬ PROJECT LOCATION
 - ▬▬▬ DETOUR ROUTE
 - SIGN
 - ⊙ TYPE III BARRICADE
 - ① SIGN GROUP NUMBER
 - ⊙ TYPE B FLASHER

